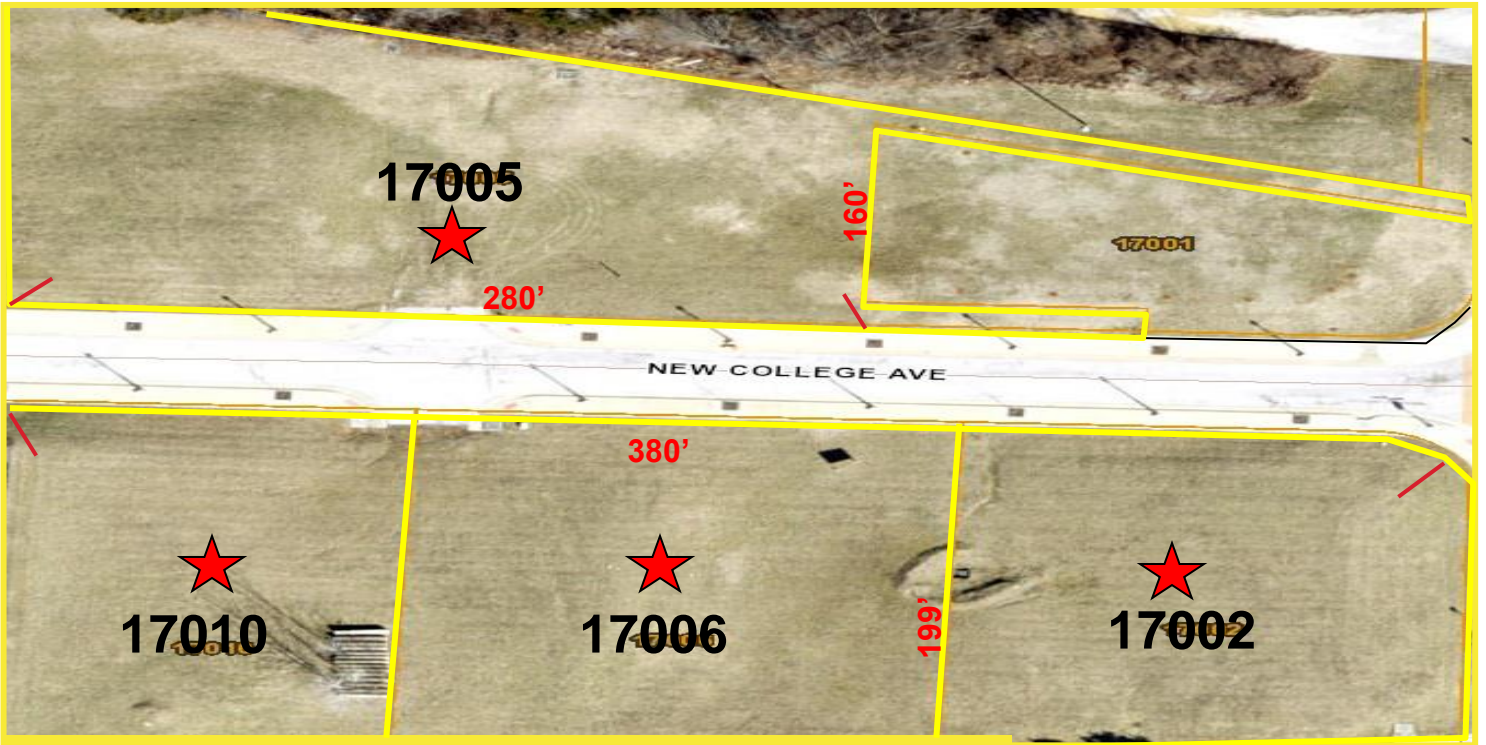


**ED HOLTHAUS REALTY LLC**

**FOR SALE**



17002, 17005, 17006 & 17010  
New College Ave.  
Wildwood, MO 63040

**4 Lots  
FOR SALE**

*For more information, please contact:*

**Ed Holthaus**  
**Cell: 314-378-0060**  
**ed@ehrstl.com**

Ed Holthaus Realty LLC  
18102B Chesterfield Airport Road  
Chesterfield, MO 63005-1117

Cell: 314-378-0060  
Office: 636-532-2171  
Fax: 636-532-1920

[www.ehrstl.com](http://www.ehrstl.com)

Licensed in Missouri & Illinois



FOR SALE

- Commercial Property
- Located in Wildwood, MO

Lot 17001- This lot is an easement with underground storm water storage tanks

Lot 17002: 21, 475 Sq. Ft. – \$75,162- MLS# 20022345

Lot 17005: 33,192 Sq. Ft - \$116,172 - MLS# 20022346

Lot 17006: 25,831 Sq. Ft. – \$90,408 - MLS# 20022347

Lot 17010: 28,622 Sq. Ft. – \$100,177 - MLS# 20022348

Price: \$3.50 per Sq. Ft. - \$381,919

The information herein is not warranted, although it has been obtained from the owner of the property or from other sources that we deem reliable. It is subject to change without notice. Seller and broker made no representation as to the environmental condition of the property and recommend purchaser's independent investigation.

**ED HOLTHAUS REALTY LLC**

**FOR SALE**



*Directions: Take Hwy 109, south of Manchester Rd. to New College Ave. – Rockwood Bank is on the east corner. Go east on New College Ave. ¼ mile to the lots on both sides of the road.*

17002, 17005, 17006 & 17010  
New College Ave.  
Wildwood, MO 63040

**4 Lots  
FOR SALE**

**Ed Holthaus**  
**Cell: 314-378-0060**  
**ed@ehrstl.com**

The information herein is not warranted, although it has been obtained from the owner of the property or from other sources that we deem reliable. It is subject to change without notice. Seller and broker made no representation as to the environmental condition of the property and recommend purchaser's independent investigation.

