

**ED HOLTHAUS REALTY LLC**

**FOR SALE**



620 White Road  
Chesterfield, MO 63017

**1 Acre**  
**MLS # 19038115**

For more information, please contact:

**Ed Holthaus**  
**Cell: 314-378-0060**  
**ed@ehrstl.com**

## FOR SALE

- 160 foot frontage on White Road. 272 feet deep
- We assume the home and the outbuilding will be removed by purchaser
- Great Lot for one, two, three, or four homes, depending on City of Chesterfield zoning
- Very Private, Great Location

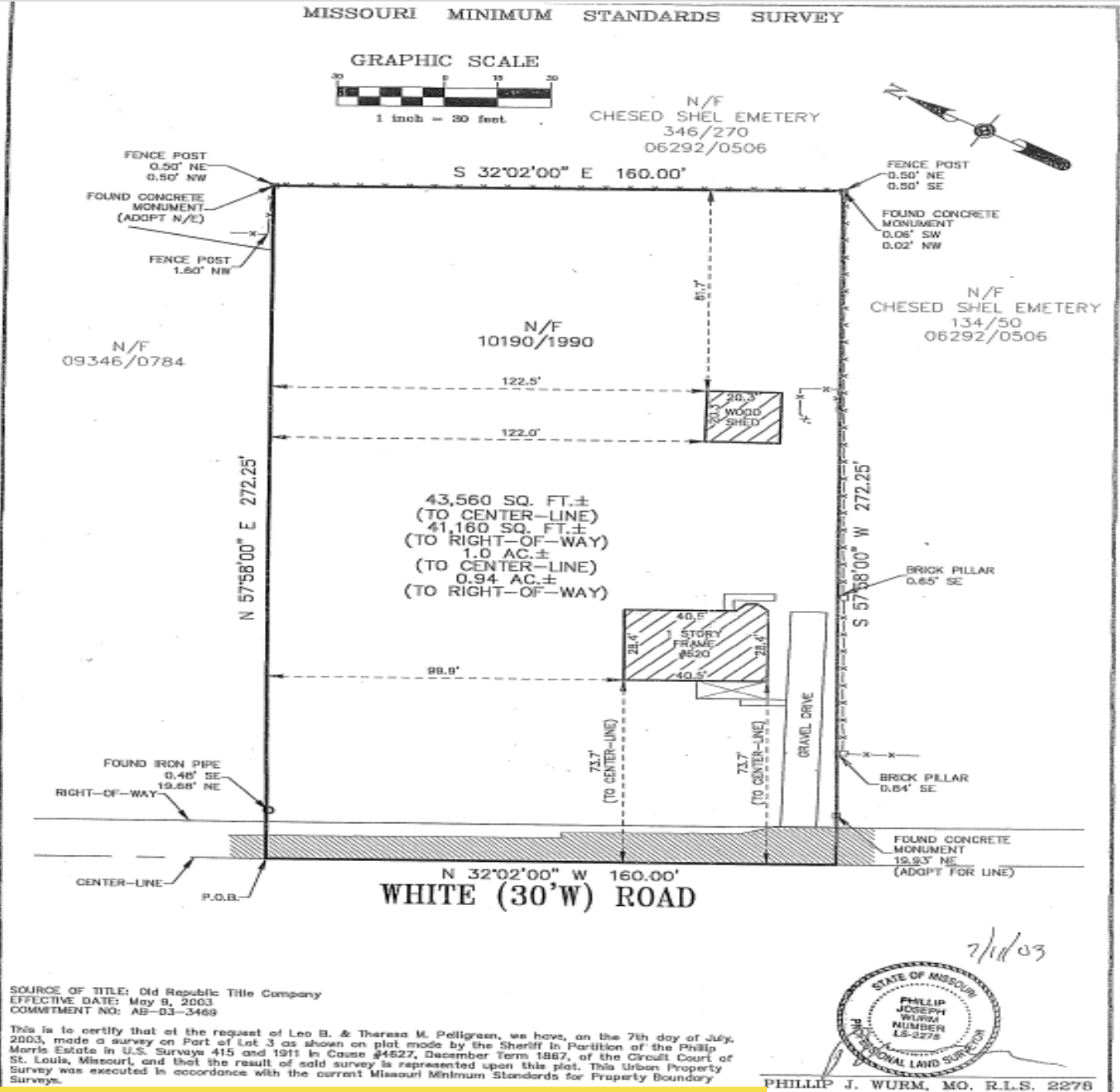
*Directions: Take Olive St. Rd 1 mile west of Hwy 141/Woods Mill Rd. to White Rd. on Southside. Go South on White Road ½ mile to property on left.*

Price: \$199,000

Ed Holthaus Realty LLC  
18102B Chesterfield Airport Road  
Chesterfield, MO 63005-1117  
Cell: 314-378-0060  
Office: 636-532-2171  
Fax: 636-532-1920  
[www.ehrstl.com](http://www.ehrstl.com)

Licensed in Missouri & Illinois





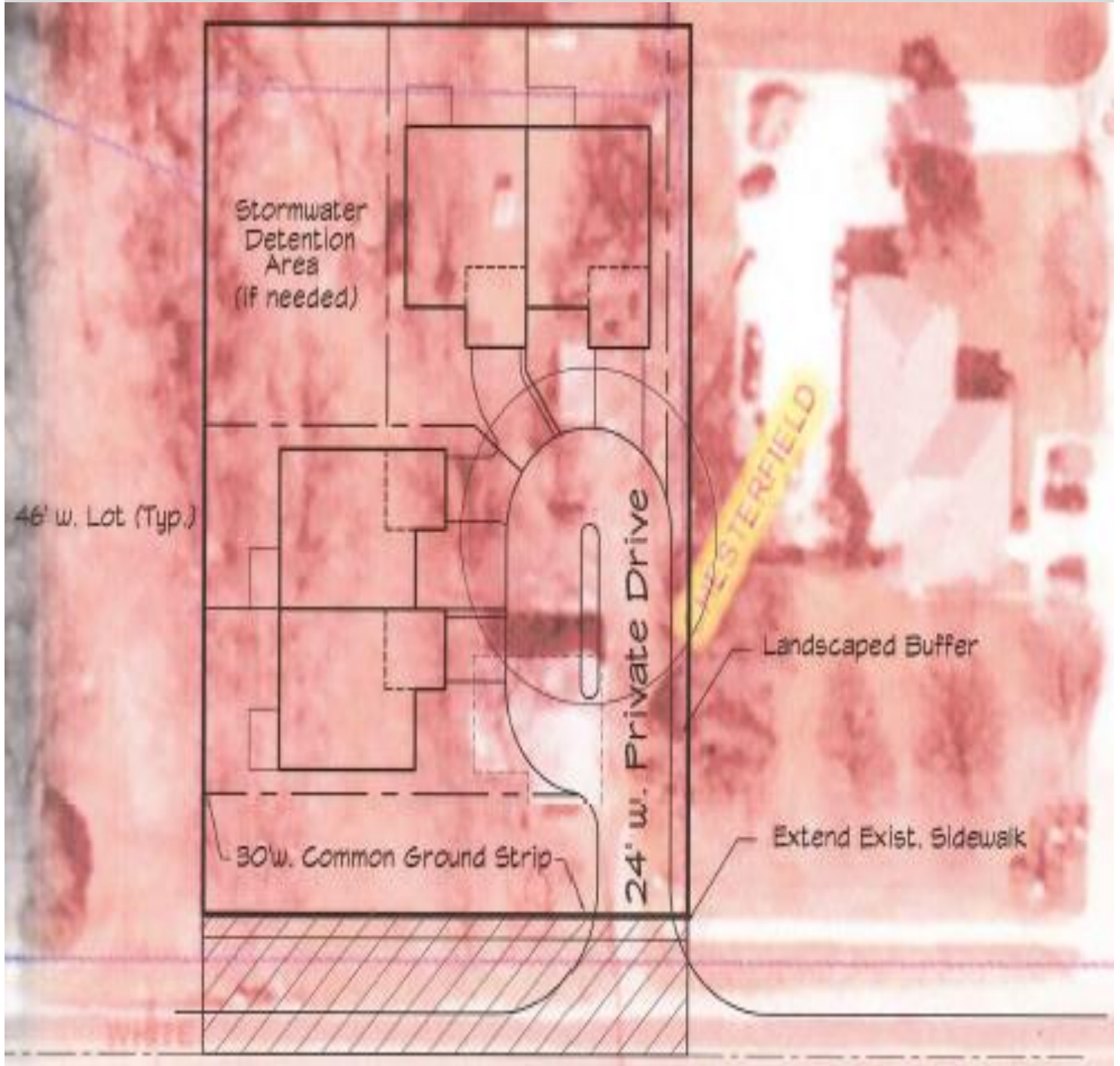
620 White Road  
Chesterfield, MO 63017

1 Acre  
MLS # 19038115

Ed Holthaus  
Cell: 314-378-0060  
ed@ehrstl.com

**ED HOLTHAUS REALTY LLC**

**FOR SALE**



620 White Road  
Chesterfield, MO 63017

**1 Acre**  
**MLS # 19038115**

**Ed Holthaus**  
**Cell: 314-378-0060**  
**ed@ehrstl.com**

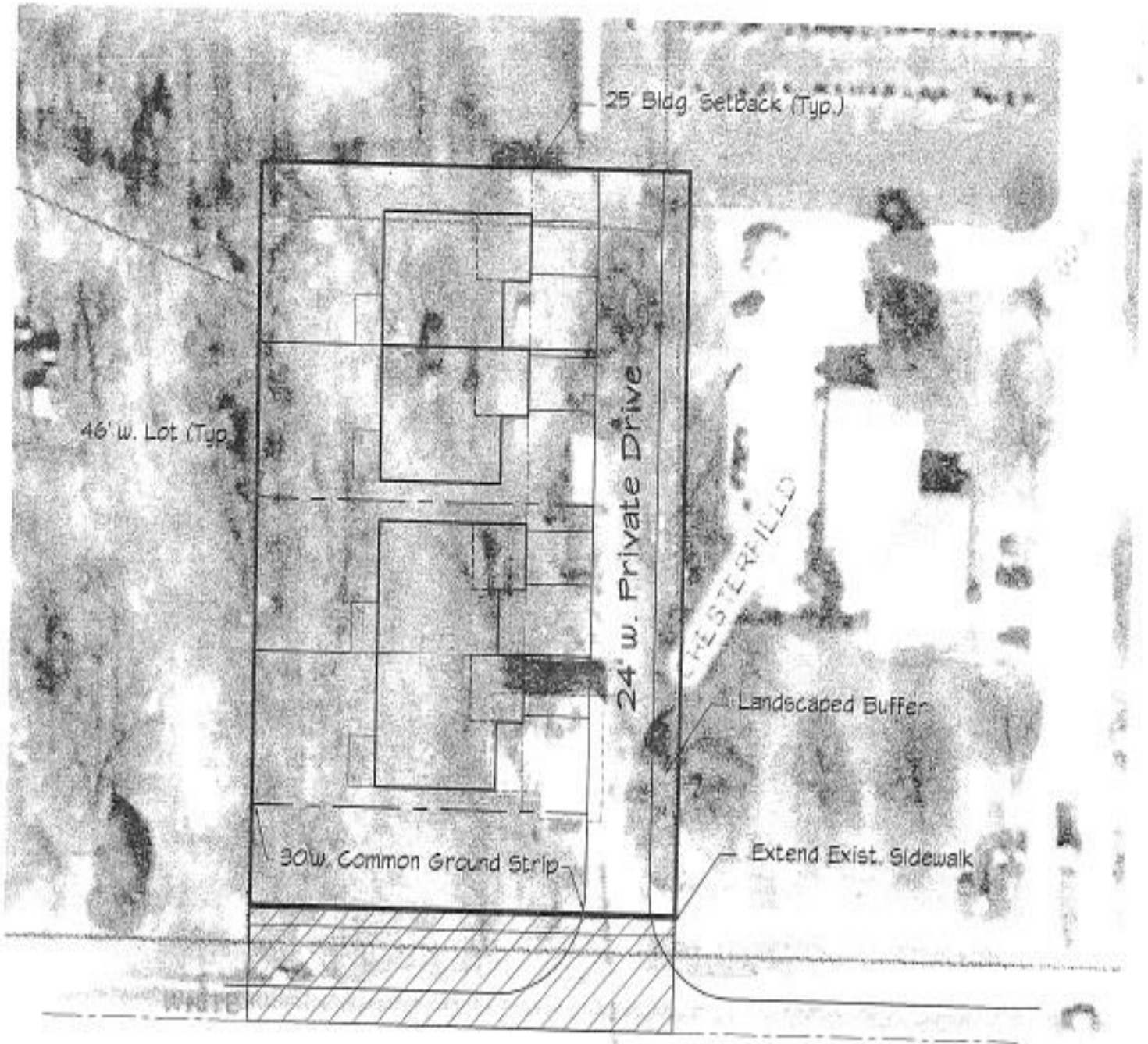
The information herein is not warranted, although it has been obtained from the owner of the property or from other sources that we deem reliable. It is subject to change without notice. Seller and broker made no representation as to the environmental condition of the property and recommend purchaser's independent investigation.





**ED HOLTHAUS REALTY LLC**

**FOR SALE**



620 White Road  
Chesterfield, MO 63017

**1 Acre**  
**MLS # 19038115**

**Ed Holthaus**  
**Cell: 314-378-0060**  
**ed@ehrstl.com**

The information herein is not warranted, although it has been obtained from the owner of the property or from other sources that we deem reliable. It is subject to change without notice. Seller and broker made no representation as to the environmental condition of the property and recommend purchaser's independent investigation.

