

HOLTHAUS

REALTY & DEVELOPMENT

FOR SALE



640 Cepi Drive
Chesterfield, MO 63005

1600 to 5300 Sq. Ft.
Office Space
MLS#22004215

FOR LEASE

- 1600 to 3600 to 5300 Sq. Ft. Office Space
- 16 Private Offices
- Secure Data Area
- Reception Area, Administrative Area, Kitchen
- Formerly Law Office
- Great Location

Price: \$15.50 per Sq. Ft. - Gross

For more information, please contact:

Ed Holthaus
Cell/Text: 314-378-0060
ed@buymud.com

Holthaus Realty & Development, Inc.
18102A Chesterfield Airport Road
Chesterfield, MO 63005-1117

Office: 636-532-2171

Fax: 636-532-1920

www.buymud.com

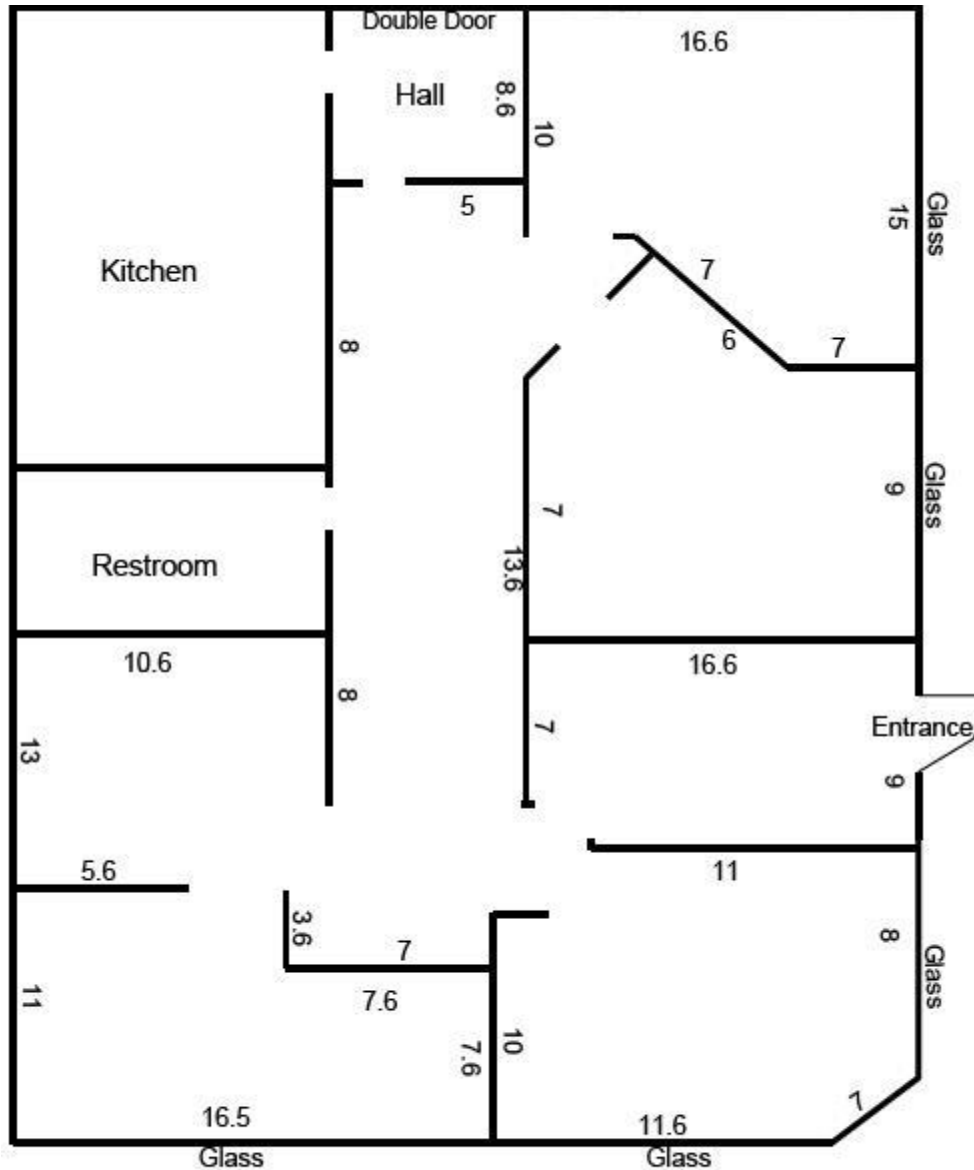
The information herein is not warranted, although it has been obtained from the owner of the property or from other sources that we deem reliable. It is subject to change without notice. Seller and broker made no representation as to the environmental condition of the property and recommend purchaser's independent investigation.



HOLTHAUS

REALTY & DEVELOPMENT

FOR LEASE



1620 Square Feet
(Not to scale – sizes are approximate)

Ed Holthaus
314-680-2624
ed@buymud.com

Holthaus Realty & Development,
Inc.

18102A Chesterfield Airport Road
Chesterfield, MO 63005-1117

Office: 636-532-2171

Fax: 636-532-1920

640 Capi Drive
Chesterfield, MO 63005

Office Space

The information herein is not warranted, although it has been obtained from the owner of the property or from other sources that we deem reliable. It is subject to change without notice. Seller and broker made no representation as to the environmental condition of the property and recommend purchaser's independent investigation.



HOLTHAUS

REALTY & DEVELOPMENT

FOR LEASE



640 Cepi Drive
Chesterfield, MO 63005

Office Space

For more information, please contact:

Ed Holthaus
314-680-2624
ed@buymud.com

Directions: Take Hwy 40 West to Long Road Exit. Go West on Chesterfield Airport Road approx. 1 mile to Cepi Drive on left. Turn Left on Cepi Drive and 640 Cepi Drive is the first building on the Left. Turn into parking lot, just past building.

Holthaus Realty & Development,
Inc.
18102A Chesterfield Airport Road
Chesterfield, MO 63005-1117
Office: 636-532-2171
Fax: 636-532-1920
www.buymud.com

The information herein is not warranted, although it has been obtained from the owner of the property or from other sources that we deem reliable. It is subject to change without notice. Seller and broker made no representation as to the environmental condition of the property and recommend purchaser's independent investigation.



